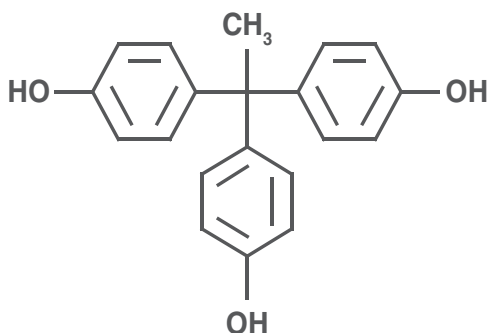


Speciality Monomers

THPE



Excel manufactures 1,1,1,tris (4-hydroxyphenyl) ethane (THPE). This molecule is used as cross linking or branching agent for polymers like Polycarbonates, Epoxy, Polyesters and similar systems where an -OH functional reactant is used.

Given its tri functionality, it finds applications in hyperbranched systems suitable for adhesive and coating applications. Additionally unique properties like low viscosity, high thermal resistance make this an ideal candidate for demanding applications. THPE, yields polymers with a wide range starting from soft materials to hard highly crosslinked materials.

Physical Properties

Chemical Name	1,1,1,tris (4-hydroxyphenyl) ethane
Molecular Formula	$C_{20}H_{18}O_3$
Molecular Weight	306
CAS No.	27955 – 94 – 8
Typical Analysis	
Appearance	White powder
Melting point (°C)	245 - 248
Purity; min (%)	99.5
Moisture (%)	0.2

Packaging

Standard size - 50 kg fibre board drums with LDPE liners; 500 kg Polywoven sacks with LDPE liners

Please contact us with your specific packaging requirements and we will be pleased to support your needs.

Handling

In accordance with good industrial practice, handle with care and prevent contamination of the environment. Avoid dust formation and ignition sources. Please contact for an MSDS or additional information.

Please contact us for Tris hydroxyphenyl methane (THPM), THPE derivatives like THPE glycidyl ethers, cyanate esters which are available on pilot levels and can be scaled up with relative ease.



Excel Industries Ltd.

All specifications and suggestions appearing here concerning the use of our products are based upon tests and data believed to be reliable. Since the actual use by others is beyond our control, no guarantee, expressed or implied, is made by EXCEL INDUSTRIES LTD. as to the effects of such use or the results to be obtained.

Polymer Input Business,
Phone: +91 22 6646 4262 | +91 22 6646 4316
Email Id: polymerinputs@excelind.com
Website: www.excelind.co.in